

# Introducing AYDEN signature plan

This 2,285 sq. ft. two storey is designed for family living. With either a three bedroom, or four bedroom option, Ayden offers the ideal blend of function and design. The linear office across from the mudroom was created to house everything from school papers to wrapping paper, and keeps clutter in one accessible zone. Ayden's open concept kitchen, dining and great room along the back of the home connect your indoor living spaces with your outdoor living spaces. Upstairs holds a beautiful master suite with large bath and dressing room, with optional access to the laundry room.

To learn how Ayden can be modified to fit your life please contact us.

# OUR SIGNATURE PLANS

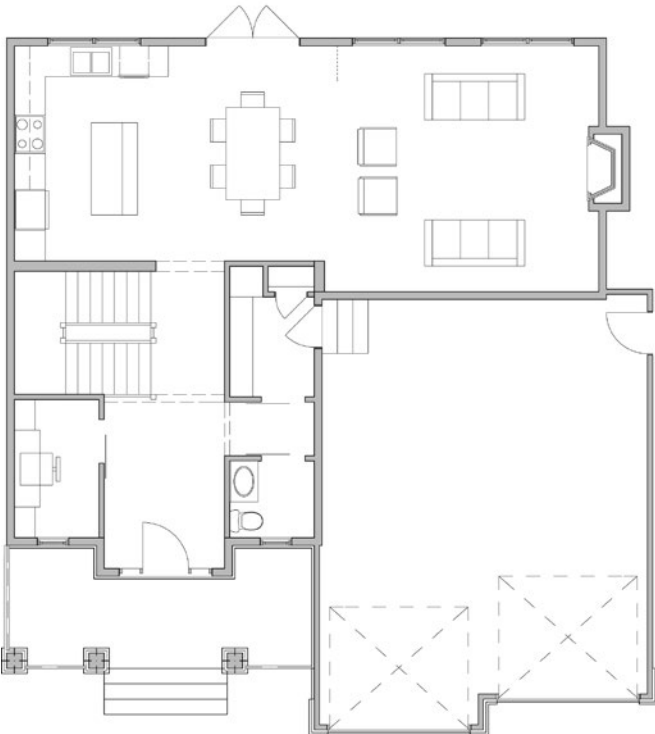
*Maison Design+Build has created a series of signature floor plans designed to inspire you.*

Each of our plans feature the best of curb appeal, functionality and natural light. Our homes have been carefully planned with distinct entry, living and sleeping spaces, large kitchens and dining areas, beautiful sight lines, luxurious bathrooms, and utility zones that offer storage solutions for life's clutter.

We believe that every home should tell the story of the family that lives there. Our build starts with getting to know you and understanding your style. Choose one of our thoughtfully designed signature plans and personalize it by selecting your preferred layout and exterior. We'll incorporate best practices in energy efficiency and construction techniques, and help you select your interior features and finishes from a carefully edited menu to create a home that feels timeless and fresh.

## FLOOR PLANS

MAIN FLOOR PLAN: 1,009 SQ FT



SECOND FLOOR PLAN: 1,275 SQ FT

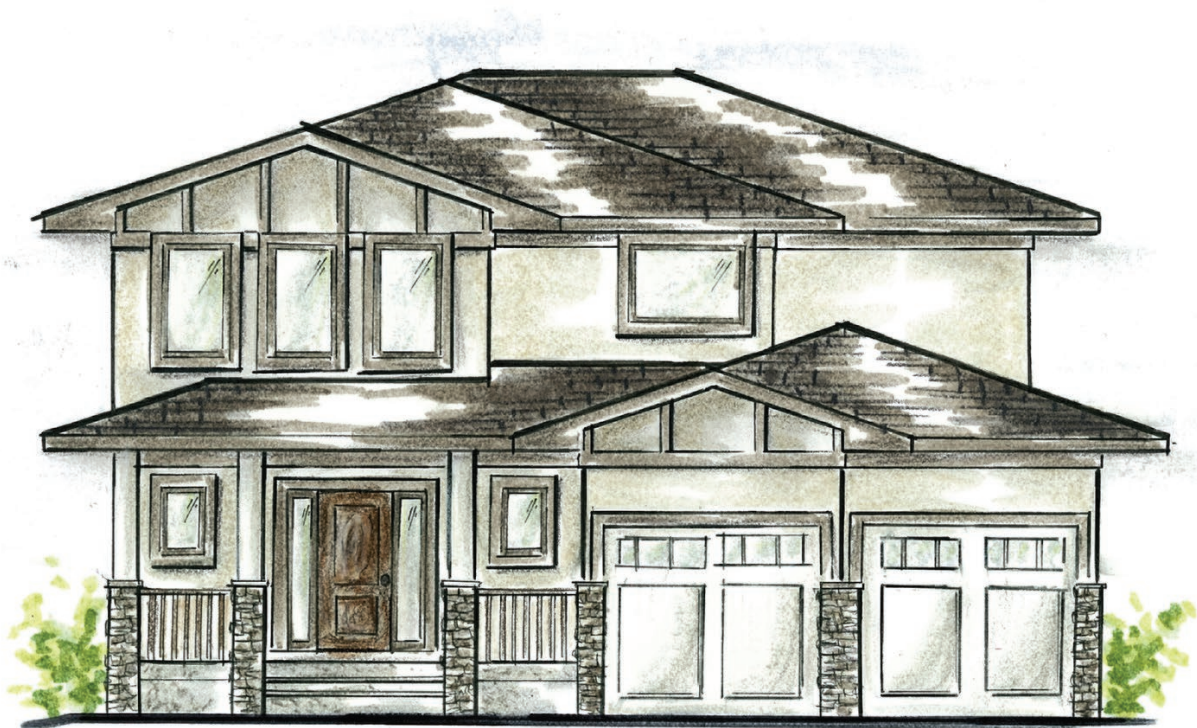




---

EXTERIOR ELEVATION

---



MAISON  
DESIGN+BUILD

maisondesignbuild.ca | 306.242.3653 | [f](#) [@](#) [+](#)

