

Introducing MOORE signature plan

This 1,764 sq ft two storey home is big on character with its Craftsmen exterior and showy roof pitches, but even bigger on versatility with its optional third storey loft increasing the total square footage to 2050. With a narrow footprint, Moore is perfect for infill sites and smaller lots. Features include a main floor den, mudroom, second floor laundry, and well-proportioned sleeping spaces. Moore delivers style and functionality with dedicated areas for custom build ins such as bookshelves, desks and benches. Moore can be built with a rear detached or front attached garage.

To learn how Moore can be modified to fit your life please contact us.

OUR SIGNATURE PLANS

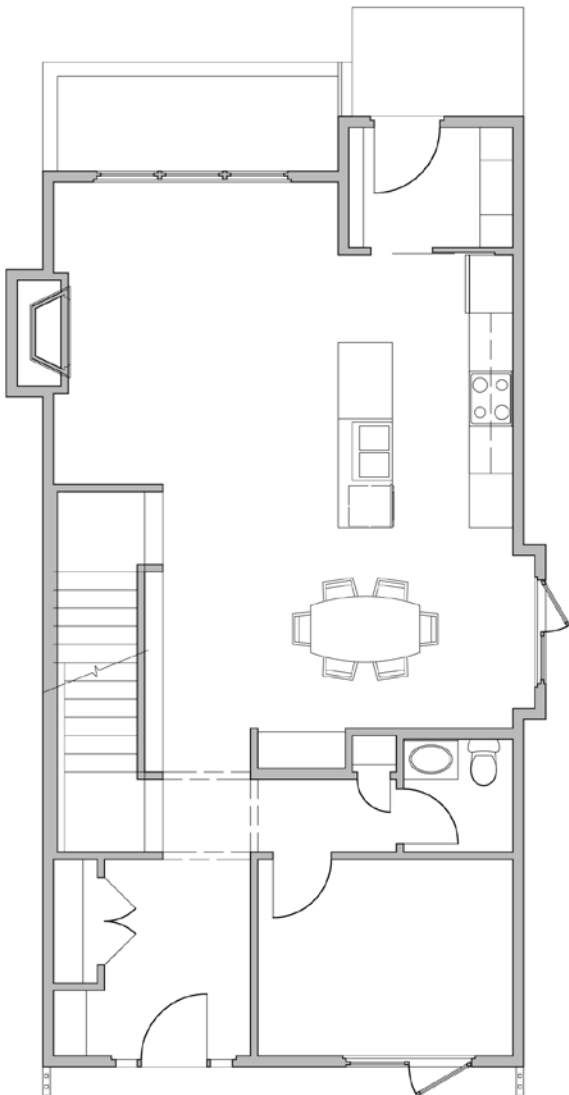
Maison Design+Build has created a series of signature floor plans designed to inspire you.

Each of our plans feature the best of curb appeal, functionality and natural light. Our homes have been carefully planned with distinct entry, living and sleeping spaces, large kitchens and dining areas, beautiful sight lines, luxurious bathrooms, and utility zones that offer storage solutions for life's clutter.

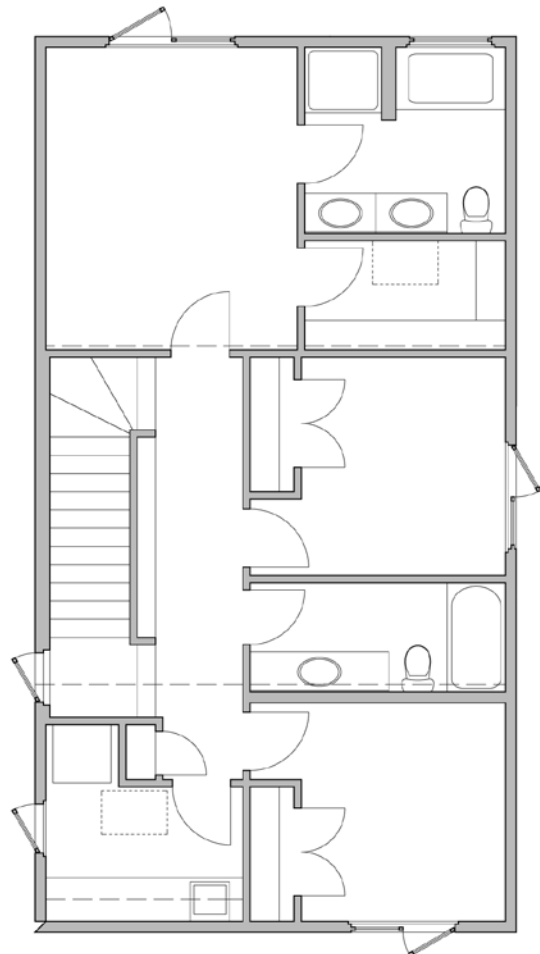
We believe that every home should tell the story of the family that lives there. Our build starts with getting to know you and understanding your style. Choose one of our thoughtfully designed signature plans and personalize it by selecting your preferred layout and exterior. We'll incorporate best practices in energy efficiency and construction techniques, and help you select your interior features and finishes from a carefully edited menu to create a home that feels timeless and fresh.

FLOOR PLANS

MAIN FLOOR PLAN: 941 SQ FT

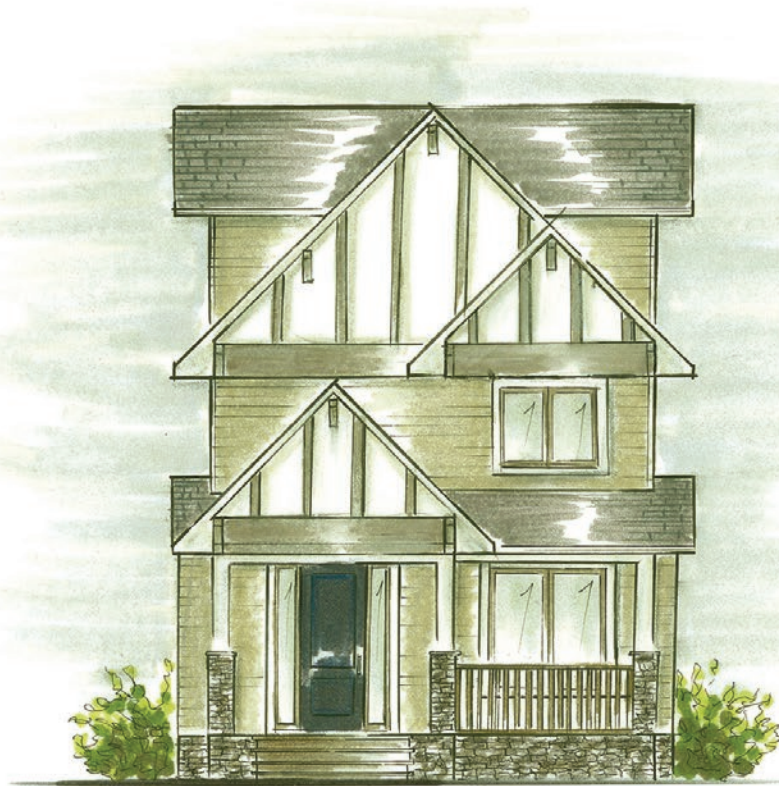


SECOND FLOOR PLAN: 823 SQ FT





EXTERIOR ELEVATION



MAISON
DESIGN+BUILD

maisondesignbuild.ca | 306.242.3653 |   

